

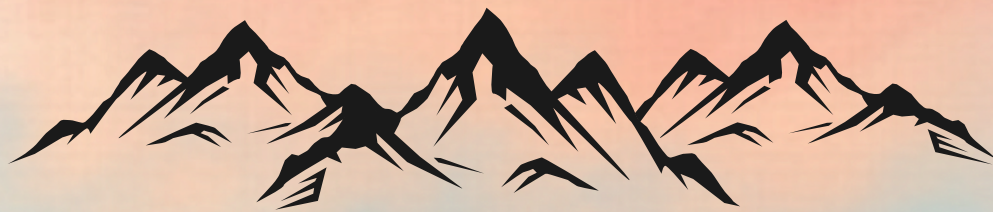


BURAN GHATI TREK

Discover Yourself on the Trail!

9322202665 / 8329769381

TREK DETAILS



21st May to 31st May 2026

Duration : 11 Days

Region: Shimla

Grade: Challenging

Maximum Altitude: 4572m

Fees : 29200/- + Airfare



SHORT ITINERARY



DAY 1

Arrive in Delhi and proceed to Shimla by road – a scenic drive of approximately 6–7 hours.

DAY 2

*Explore Shimla And Stay for 1 night
(Acclimatization & Exploration)*

DAY 3

Shimla to Janglik (2500 M)

DAY 4

*Janglik to Dayara Thach - Trek distance 7 to 8 Km (
approx 5 to 6 hrs)*

DAY 5

*Dayara Thach to Litham Thach - Trek Distance 5 km to 6
km (approx 3 to 4 hrs)*





DAY 6

Chandranahan Lake Excursion - Trek Distance 4 km each side (approx 6 to 7 hrs)

DAY 7

Litham to Nalabansh - Trek Distance 4 km to 5 Km (3 to 4 hrs)

DAY 8

Nalabansh to Munirang - Trek Distance 8 km (10 to 11 hrs approx)

DAY 9

Munirang to Brua Village - Trek distance 5 km to 6 km (3 to 4 hrs approx) And Drive to Shimla (Reach at night)

DAY 10 &11

Shimla To Delhi By Bus (8 to 9 Hours) and delhi to pune flight



ITINERARY



DAY 1

Delhi to Shimla (8 hours drive)

Overnight bus journey through beautiful hill roads. Sit back, relax, and enjoy the scenic views.





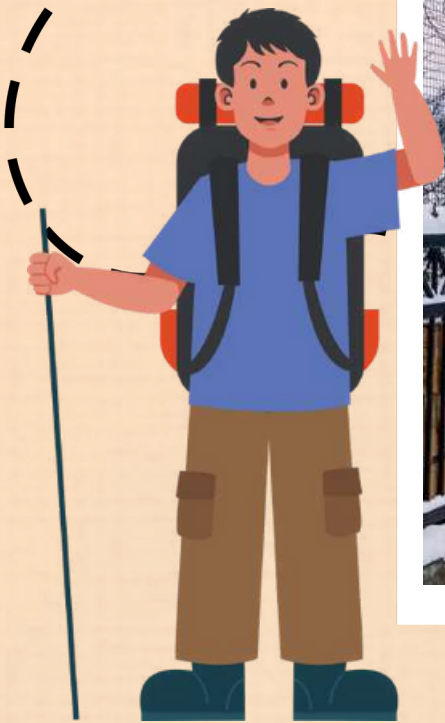
DAY 2

Explore Shimla-Acclimatization & Exploration

After arrival, take a well-deserved rest day in Shimla to acclimatize and prepare for the high-altitude trek ahead. Enjoy the cool mountain weather, explore Mall Road and local attractions, or simply relax amidst scenic surroundings. This leisure day ensures better acclimatization and enhances overall trek safety.



ITINERARY



DAY 3

Shimla to Janglik (8 hours drive)

You will start the day early in the morning with a drive from Shimla to Janglik, which is the base camp for the Buran Ghati trek. The drive takes around 8-9 hours and takes you through beautiful villages, forests, and rivers along the way. You will spend the at Janglik.





DAY 4

Janglik to Dayara Thach - (approx 5 to 6 hrs)

After breakfast, you will start the trek from Janglik to Dayara Thach, which is a beautiful meadow situated at an altitude of 3400 meters. The trek is around 6-7 hours long and takes you through dense forests of pine, oak, and rhododendron trees. You will also cross a few streams along the way. On reaching Dayara Thach, we will set up our tents and spend the night.

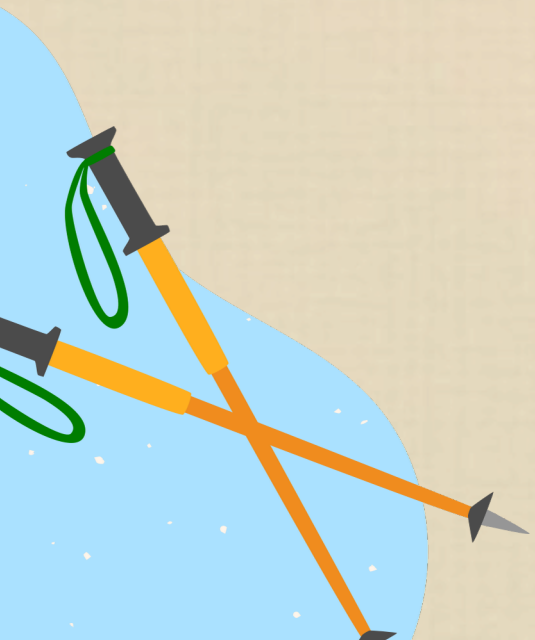




DAY 5

Dayara Thach to Litham Thach - Trek Distance 5 km to 6 km (approx 3 to 4 hrs)

Today's trek is around 5-6 hours long and takes you to Litham Thach, which is a beautiful campsite situated at an altitude of 3800 meters. The trail is well-defined and takes you through a mix of forests, meadows, and rocky terrain. You will also come across some small waterfalls and streams along the way. On reaching Litham Thach, you will set up your tents and spend the night.





DAY 6

Chandranahan Lake Excursion - Trek Distance 4 km each side (approx 6 to 7 hrs)

Today, you will go on an excursion to the stunning Chandranahan Lake, which is located at an altitude of 4200 meters. The trek is around 6-7 hours long and takes you through some steep rocky terrain. You will also cross a few glaciers and streams along the way. On reaching the lake, you can spend some time admiring the beautiful surroundings before trekking back to Litham Thach for the night.





DAY 7

Litham to Nalabansh - Trek Distance 4 km to 5 Km (3 to 4 hrs)

Today's trek is around 5-6 hours long and takes you to Nalabansh, which is a beautiful campsite located at an altitude of 4000 meters. The trail is a mix of rocky terrain and meadows, and you will come across some beautiful waterfalls along the way. On reaching Nalabansh, you will set up your tents and spend the night.





DAY 8

Nalabansh to Munirang - Trek Distance 8 km (10 to 11 hrs approx)

Today's trek is around 6-7 hours long and takes you to Munirang, which is a beautiful campsite situated at an altitude of 3700 meters. The trail is a mix of rocky terrain and meadows and takes you through some stunning views of the surrounding mountains. On reaching Munirang, you will set up your tents and spend the night.





DAY 9

Munirang to Brua Village - Trek distance 5 km to 6 km (3 to 4 hrs approx)

Today's trek is around 5-6 hours long and takes you to Brua Village, which is the last campsite on the trek. The trail is a mix of forests and meadows and takes you through some small villages along the way. On reaching Brua Village, vehicles would be there. Brua village to Shimla. Leave for Shimla by 1pm . Reach Shimla by 10pm to 11 pm





Day 10&11

Depart from Shimla, carrying unforgettable memories of the Buran Ghati Trek. Begin the return journey to Delhi by bus (approx. 8–9 hours). Upon arrival in Delhi, proceed to the airport for your return flight to Pune..





INCLUSIONS



Accommodation at Base Camp :

Delhi - janglik - delhi travel by volvo bus

Spacious and Comfortable tents at Base Camp provided on sharing basis(6-8persons)

the tents come with a ground bedding, thick foam mattress, pillows and blankets,

hot water for bath at base camp.

Accommodation at higher base camps :

alpine/dome tents (3/4/5persons) during the trek in the higher camps

separate toilet tent facility

sleeping bags (holofill)

trekking mats, rucksack

meals :

wholesome, hygienic vegetarian meals throughout the program.

forest permits and camping charges

first aid :

basic first aid kit

oxygen cylinders and portable altitude chamber (pac) for high altitude treks

Insurance :

Insurance





• EXCLUSIONS •

Rescue, hospitalization and related expenses

any expenses included due to extended stay due to any

- unforeseen calamity

- extra food, mineral water or any other expenses

- porter for personal luggage

- airfare

any items not mentioned in includes

any type of personal expenses

personal gear and equipment's

-





Registration of the trek:

Rs 10000/- to be paid at the time of Booking
Transfer trek fees and WhatsApp screenshot on
9322202665 with your name

Seat will be confirmed only after payment of fees.
9322202665 / 8329769381

Bank Details:

Name: TRINITY ADVENTURES

Bank: HDFC Bank

Type: Current

A/c Number: 50200088653072

IFSC: HDFC0000427

Gpay No : 9422514013

*See you in the
mountains*